

HOW CAN WE RE-IMAGINE OUR WORLDVIEW?

PIONIERSFABRIEK
7 OCT. 2021 - NL

JEREMY LENT

THE PRESENT
WORLDVIEW
HAS LED TO ...

CLIMATE CHANGE



- × WILDFIRE
- × DROUGHTS &
- × FLOODS

VAST ECOLOGICAL
DESTRUCTION



68% DECLINE
ANIMAL POPULATION

6TH EXTINCTION
OF SPECIES

CORAL REEFS
VANISH

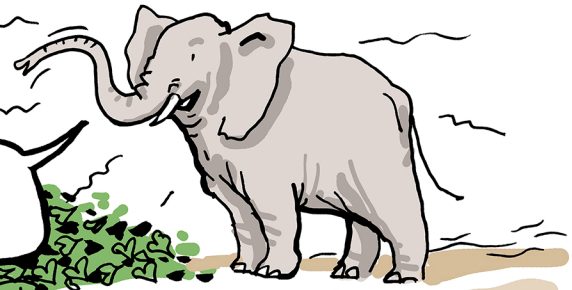
95% OF EARTH'S
LAND WILL BE
DEGRADED BY 2100

WE NEED A NEW STORY OF
CONNECTEDNESS

BY INTEGRATING SCIENCE
& TRADITIONAL WISDOM

THE MODERN STORY
OF SEPARATION:

- NATURE = MACHINE
- HUMANS ARE SEPARATE FROM NATURE ...
- ... AND FROM EACH OTHER
- HUMAN PROGRESS = CONQUEST OF NATURE
- EARTH = RESOURCE TO EXPLOIT FOR HUMAN BENEFIT
- PURPOSE OF LIFE = GET RICH & POWERFULL



EXISTENTIAL QUESTIONS
THAT ARISE ...

WHO AM I?

I AM A MIND-BODY
ORGANISM CAPABLE
OF INTEGRATION
(WU-WEI & YU-WEI)

WHERE AM I?

I AM PART OF A
FRACTALLY CONNECTED
SELF-ORGANISED UNIVERSE

WHAT AM I?

I AM A RESILIENT
PATTERN OF SELF-
ORGANISED CO-OPERATION

HOW SHOULD
I LIVE?

I SHOULD LIVE
IN REVERENCE AND
CARE FOR ALL LIFE

WHY AM I?

I AM HERE TO
WEAVE MY PART
IN THE WEB OF
MEANING

CULTURE SHAPES VALUES
VALUES SHAPE HISTORY
OUR VALUES WILL SHAPE
THE FUTURE



WOOD-WIDE WEB

WWW.OLIVIERRIJCKEN.NL